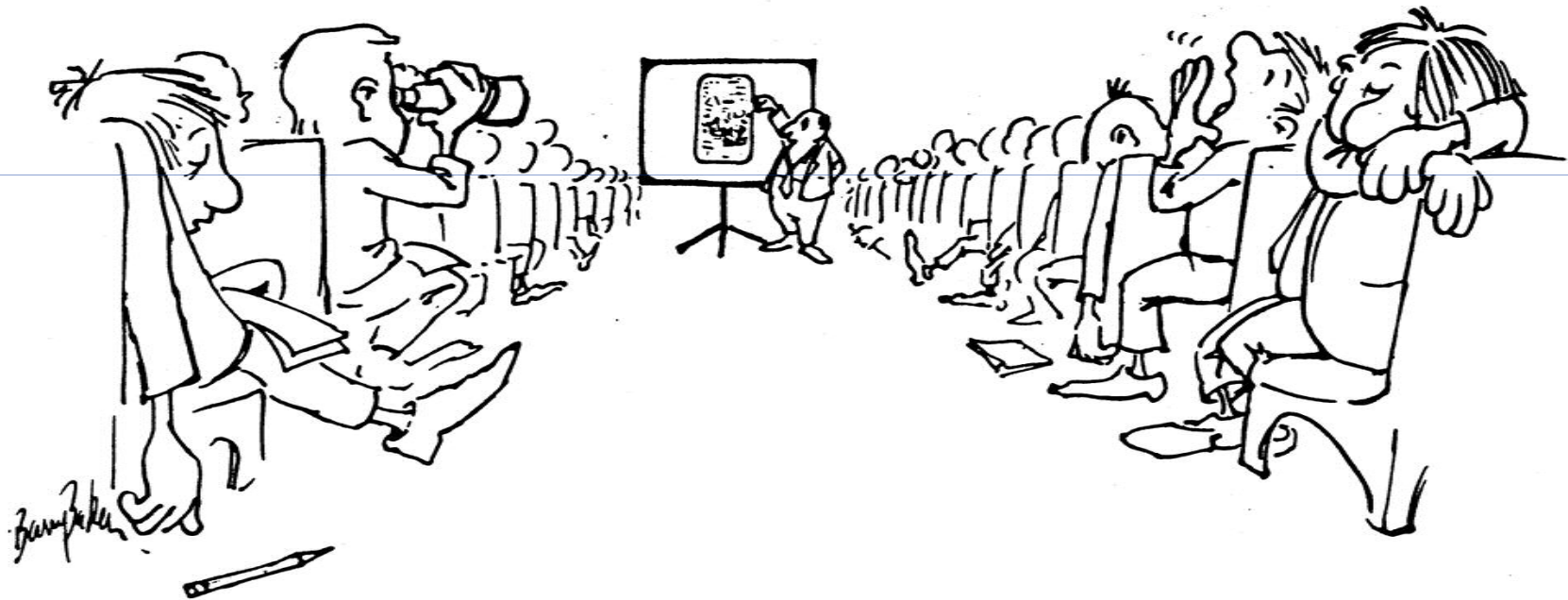


# PREPARING AN EFFECTIVE SCIENTIFIC PRESENTATION



... and this diagram clearly explains the principle underlying this very important concept.  
Next slide please ...

# **RULE 1**

## **Scientific Presentations**

---

### **Plan material for format of slides**

To set PowerPoint slide format → click on:

File → Page Setup → Slides sized for:

Choose from drop down list:

On-screen show – or – 35mm Slides

# RULE 2

## Scientific Presentations

---

No  
More  
Than  
7  
Lines  
in  
Height

# RULE 3

## Scientific Presentations

---

No more than 7 words in width

# RULE 4

## Scientific Presentations

---

5 Words in the Title

# **RULE 5**

## **Scientific Presentations**

---

### **Simplify your slides**

Use a consistent font and size

Use a consistent color scheme

**No varied colored backgrounds**

Be sure graph lines are thick enough

For 35mm slides don't get too close to edge



# RULE 6

## Scientific Presentations

---

Use only white or **yellow**  
lettering on dark backgrounds  
for maximum legibility

# **RULE 7**

## **Scientific Presentations**

---

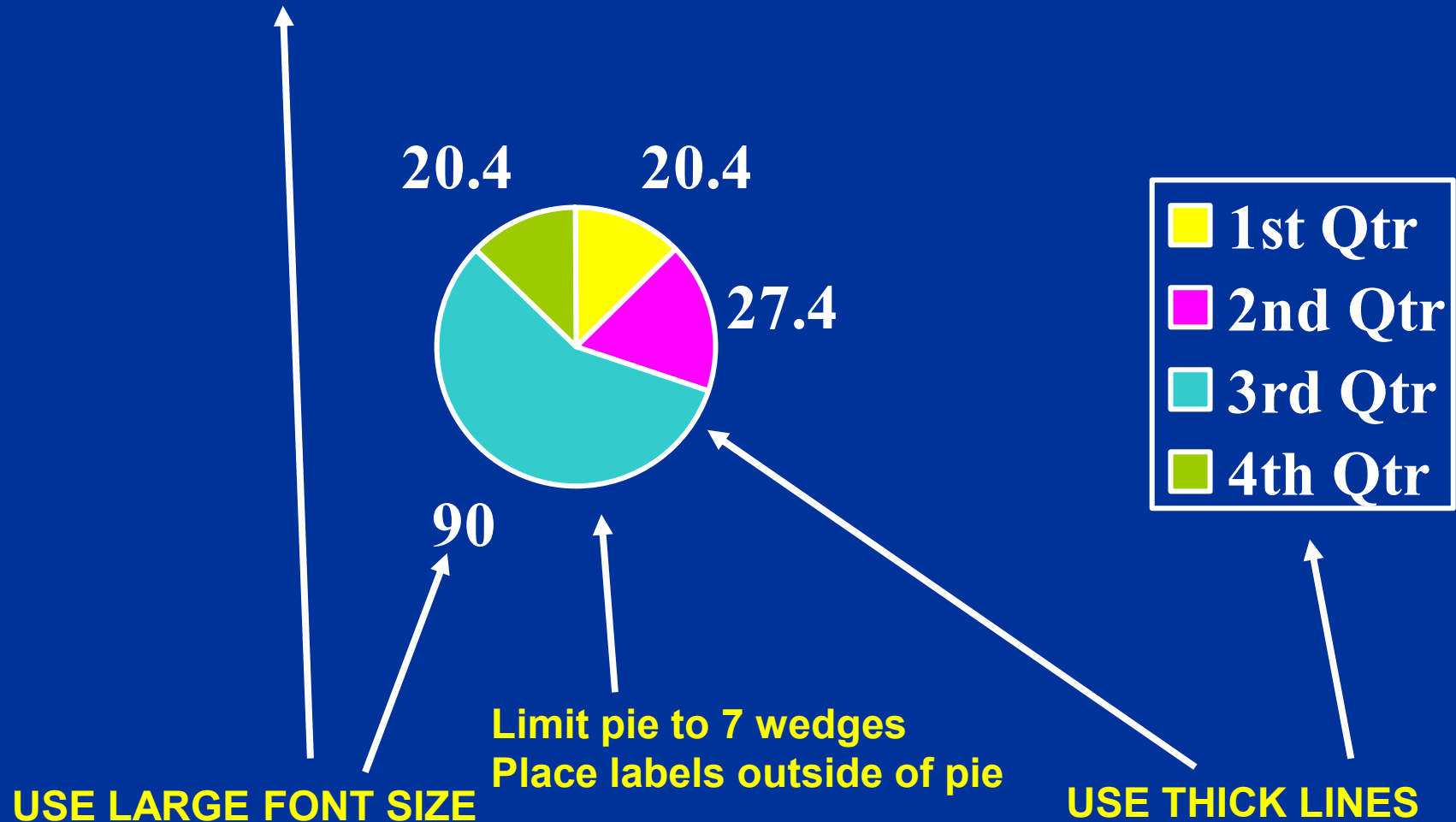
Use horizontally  
oriented slides.

Vertical and square slides can  
reduce image area.

# Scientific Presentations

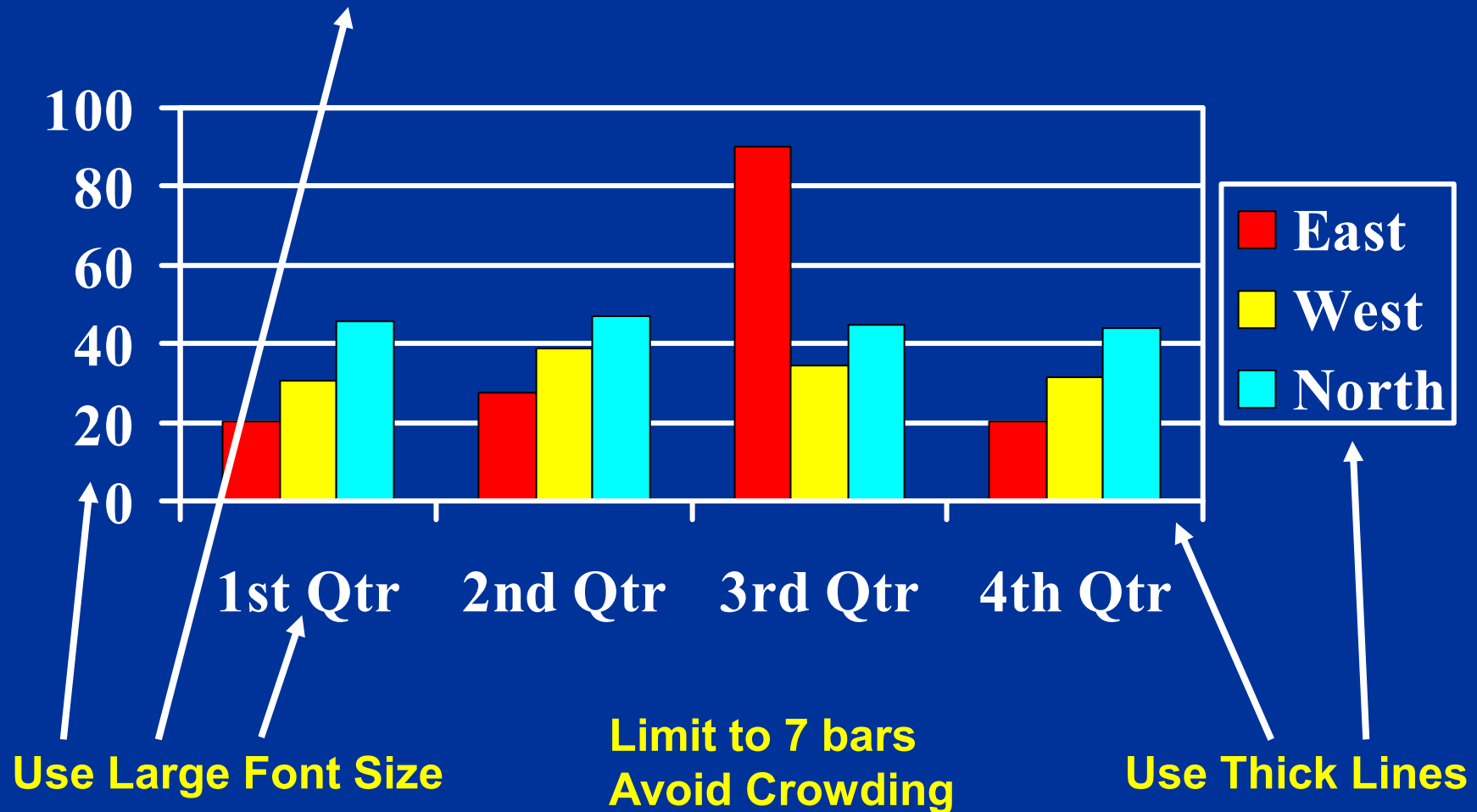
---

## PowerPoint Pie Chart Example



# Scientific Presentations

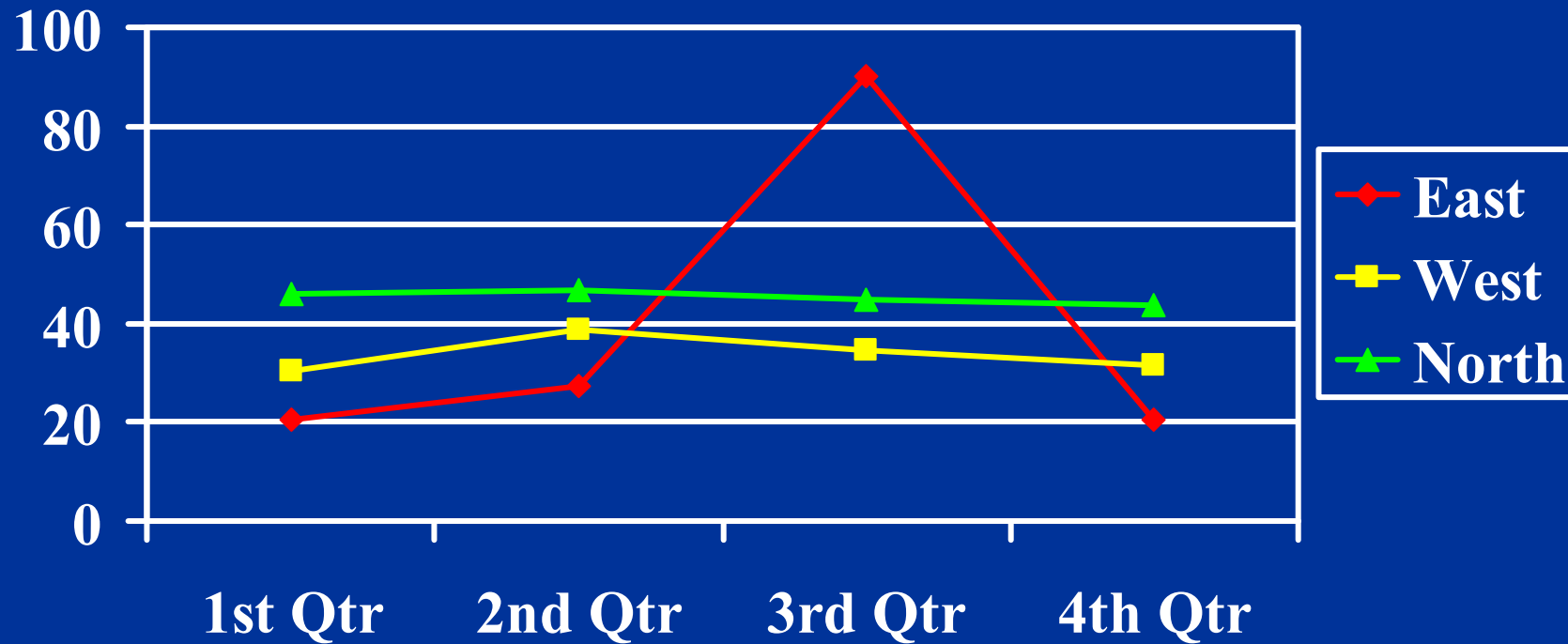
## PowerPoint BarGraph Example



# Scientific Presentations

---

## PowerPoint Line Graph Example



**Limit to 2 or 3 lines**  
**Simplify scales**  
**Use bold high-contrast colors**