

()

//

//

- *

:

:

(%) (%)

Odds Ratio

(% /)

($P < 0/000$)

(%)

III

(CAD)

(CAD)

(.)

() CAD

HDL LDL

%

MI

.()

(Case-Control Study)

%

Hamilton-Norwood

)

(

LDL

(MI)

HDL



none

* stage I

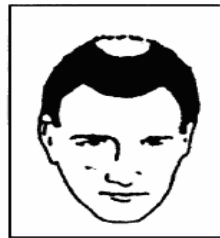
Level 0



frontal only

stage II, III, IIIa, IVa

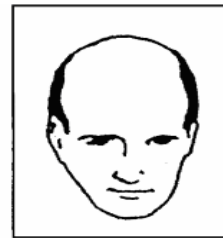
Level 1



vertex only

stage III-vertex

Level 2



frontal and vertex

stage IV, V, Va, VI, VII

Level 3

Hamilton-Norwood

LDL

MI

()

HDL

t-test

(P = 0.2)

()

(stage 3)

Odds ratio

(Confidence- Interval)

%

(% /)

(stage 2)

(%)

(P< /)

/

%

(O.R= /)

/ /

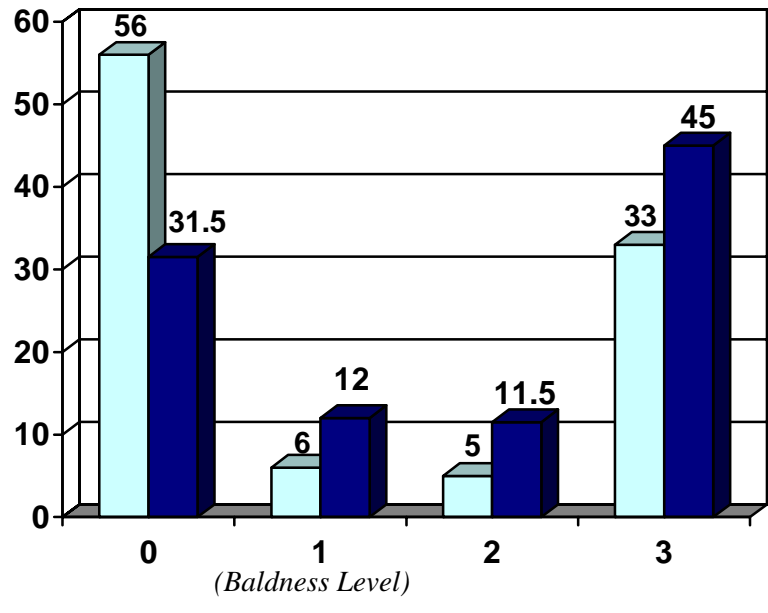
| HDL (%) | LDL (%) | (%) | (%) | Mean ±SD | |
|------------|------------|-------|-----|----------|------------|
| (/) | () | (/) | () | / ± / | (N= 200) |
| (/) | () | () | () | / ± | (N=200) |

(Hamilton-Norwood Scale)

| | | | | | |
|--|--|--|--|--|--|
| | | | | | |
| | | | | | |

| (%) | (%) | |
|-------|-----|--|
| (/) | () | |
| (/) | () | |
| () | () | |

%
% /
% % %
% %



(CAD)

()

(/)

LDL

LDL

()

LDL

()

()

HDL

/

.() (diagonal earlobe crease)

ECG

.()

/

()
(M)

.()

.()

.()

() Matilainen .()

Practice based

(/)

(/)

(/)

(P= /)

(P= /)

(P= /)

(P= /)

(P= /)

)

(

()

Matilainen

Population based

revascularization

()

Lotufo

III

)

(

)

(HDL

III

() Ben Halim

() Sasmaz

)

,HDL

,LDL

MI

B

A1

,(a)

(ECG

)

()

)

(

(a)

%

.(P< /)

%

(a)

(

)

)

(

REFERENCES

2. Ridker PM, Genest J, Libe P. Risk factors for atherosclerotic disease. *Heart Diseases*, Vol 1. WB Saunders 2001.
3. Vasan RS, Benjamin EJ, D'Agostino RB. The Burden of Increasing Worldwide Cardiovascular Disease. In: Fuster V, Alexander RW, O'Rourke RA, et al, editors. *Hurst's The Heart*. 11th ed. New York: Mc Graw Hill.2004; P:15-40.
4. Ellis JA, Stobbing M, Harrap SB. Male pattern baldness is not associated with established cardiovascular risk factor in general population. *Clin Sci (lond)* 2001;100:401-4.
5. Lesko SM, Rosenberg, Shapiro S. A Case-Control study of baldness in relation to myocardial infarction in men. *JAMA* 1993;269:998-1003.
6. Miric D, Fabijanic D, Giunio L, Eterovic D, Culic V, Bozic I, et al. Dermatological indicators of coronary risk: a case-control study. *Int J Cardiol* 1998;67:251-5.
7. Trevisan M, Farinaro E, Krogh V, Jossa F, Giumetti D. Baldness and coronary heart disease risk factor. *J Clin Epidemiol* 1993;46:1213-8.
8. Matilainen V, Koskela P, Keinanen-Kiukaanniemi S. Early androgenetic alopecia as a marker of insulin resistance. *Lancet* 2000;356:1165-6.
9. Lotufo PA, Chae CU, Ajane UA, Hennekens CH, Manson JE. Male pattern baldness and coronary heart disease. *Arch Intern Med* 2000;160:165-71.
10. Matilainen VA, Makinen PK, Keinanen-Kiukaanniemi SM. Early onset of androgenic alopecia associated with early severe coronary heart disease: a population- based case-control study. *J Cardiovasc Risk* 2001;8:147-51.
11. Ben Halim MM, Meyrick G, jeans WD, Murphy D, Burton JL. Myocardial infarction, androgen and the skin. *Br J Dermatol* 1978;98:63-8.
12. Sasmaz S, Senol M, Ozcan A, Dogan G, Tuncer C, Akyol O, et al. The risk of coronary heart disease in men with androgenic alopecia. *J Eur Acad Dermatol Venerol* 1999;12:123-5.